

Installation & CARE

1999-2011 CROWN VICTORIA PROJECTOR HEADLIGHT INSTALLATION

BEFORE INSTALLATION

- If you experience any difficulties that the instruction did not cover, please seek assistance at local automotive shop.
- Please wear protection before you work on any vehicle.
- An assistant is useful when removing the front bumper from your vehicle.
- Please be cautious when working with the bumper or any parts belonging to the vehicles's body to prevent scratching.
- Do not make direct contact with the halogen bulbs or the wire assembly until the unit has cooled down after use.

TOOLS AND SUPPLIES REQUIRED

¼" Ratchet	Phillips Screwdriver	10 mm socket	
			

PRODUCT NUMBER

2LHP-VIC98JM-TM
2LHP-VIC98-TM



LET'S START THE INSTALLATIONS



STEP 1

Before installation



STEP 2

3 plastic clips location



STEP 3

Remove 3 plastic clips



STEP 4

Remove the plastic cover



STEP 5

Remove the 2 headlight retainers



STEP 6

Remove the 2 headlight retainers



STEP 7

Remove the headlight



STEP 8

Remove the light socket



STEP 9

Disconnect the headlight harness



STEP 10

10mm nut location



STEP 11

Remove the 10mm nut



STEP 12

Remove the Phillips head screw



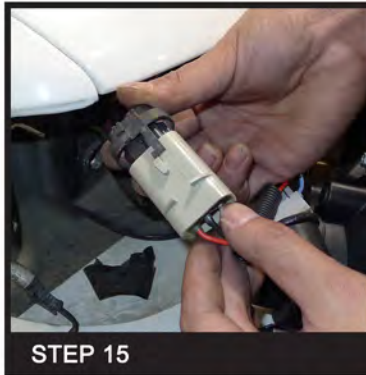
STEP 13

Remove the corner light



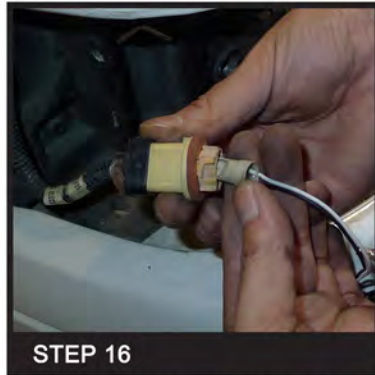
STEP 14

Remove the light socket



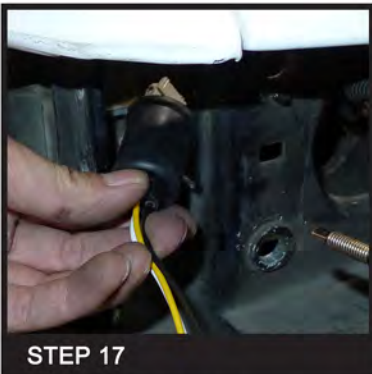
STEP 15

Connect the headlight harness to the new headlight. Connect the headlight harness. Please see the "Halo & LED headlights installation instructions" If your headlights don't have Halo and led, you can skip the instruction



STEP 16

Connect the LED connector to the light socket



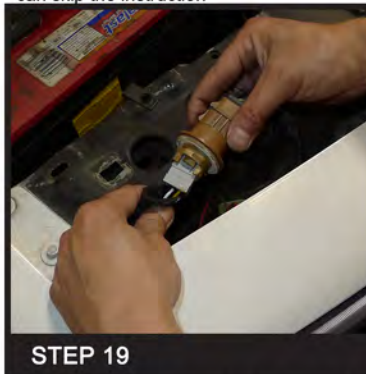
STEP 17

Remove the Phillips head screw and washer



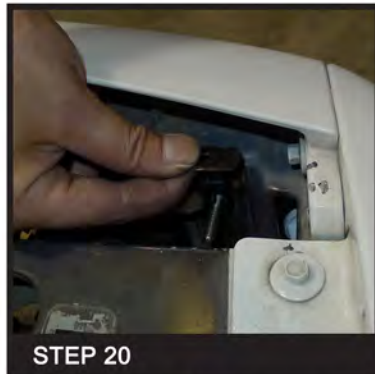
STEP 18

Position the headlight in the stock location



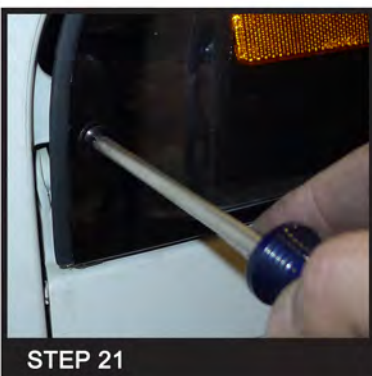
STEP 19

Connect the turn signal light connect to the light socket



STEP 20

Secure the headlight with the headlight retainers



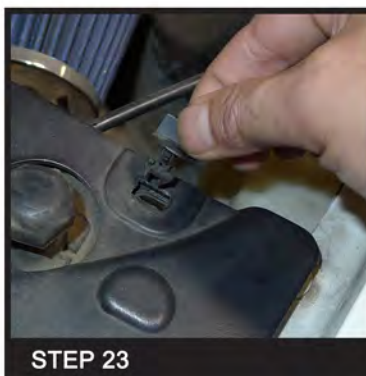
STEP 21

Install the Phillips head screw and washer



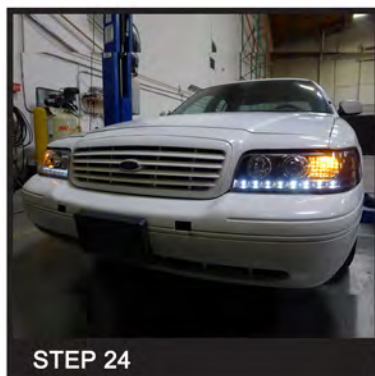
STEP 22

Replace the plastic cover



STEP 23

Replace 3 plastic clips. Please repeat the steps from 1 to 33 for the opposite side



STEP 24

The installation now is complete.