

INSTALLATION & CARE

2002-2005 FORD EXPLORER 1PC PROJECTOR HEADLIGHTS INSTALLATION INSTRUCTIONS

BEFORE INSTALLATION:

- If you experience any difficulties that the instructions did not cover, please seek assistance at a local automotive shop.
- Please wear proper protective equipment before you work on any vehicle.
- An assistant is recommended when removing the front bumper from your vehicle.
- Please be cautious when working with the bumper or any parts belonging to the vehicle's body to prevent scratching.
- Do not make direct contact with the halogen bulbs or the wire assembly until the unit has cooled down after use.

TOOLS AND SUPPLIES REQUIRED

Needle Nose Plier	Plastic Pry bar	8 mm Wrench	Phillips Screwdriver
			

PRODUCT NUMBER

2LHP-EPOR02-TM
2LHP-EPOR02JM-TM
2LHP-EPOR02BK-TM
2LHP-EPOR02G-TM



LET'S START THE INSTALLATION



STEP 1

Pull up to release two levers behind the headlight



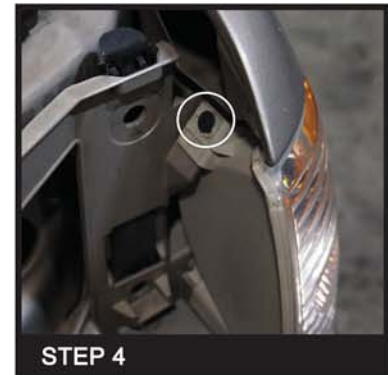
STEP 2

Unseat the factory headlight housing



STEP 3

Disconnect the headlight harness and remove the factory headlight housing



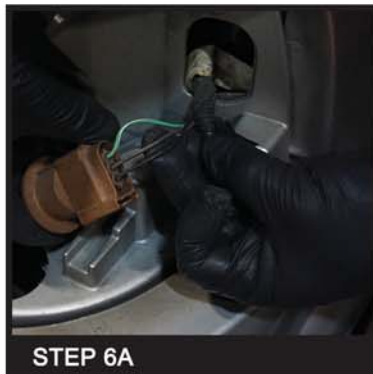
STEP 4

Remove one phillips screw



STEP 5

Remove the corner light housing



STEP 6A

Connect the Halo LED wires to the parking light, Brown (+) and Black (-)



STEP 6B

Connect the Halo LED wires to the parking light, Brown (+) and Black (-)



STEP 6C

Connect the Halo LED wires to the parking light, Brown (+) and Black (-)



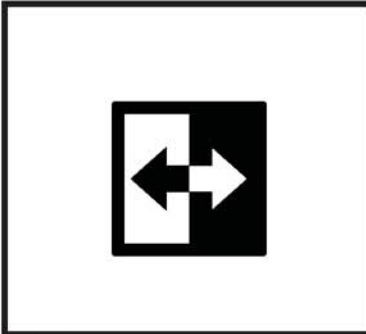
STEP 7

Connect the headlight harness and seat the new headlight assembly in place



STEP 8

Press down the two levers to lock the headlight



STEP 9

Please repeat the steps from 1 to 8 for the opposite side



STEP 10

Close the hood to complete installation

INSTALLATION & CARE

2002-2005 FORD EXPLORER 1PC PROJECTOR HEADLIGHTS INSTALLATION INSTRUCTIONS

BEFORE INSTALLATION:

- If you experience any difficulties that the instructions did not cover, please seek assistance at a local automotive shop.
- Please wear proper protective equipment before you work on any vehicle.
- An assistant is recommended when removing the front bumper from your vehicle.
- Please be cautious when working with the bumper or any parts belonging to the vehicle's body to prevent scratching.
- Do not make direct contact with the halogen bulbs or the wire assembly until the unit has cooled down after use.

2002-2005 FORD EXPLORER 1PC PROJECTOR HEADLIGHTS INSTALLATION INSTRUCTIONS

