

# INSTALLATION & CARE

## 2009-2014 FORD F150 PROJECTOR SWITCHBACK HEADLIGHT INSTALLATION INSTRUCTION

### BEFORE INSTALLATION:

- If you experience any difficulties that the instructions did not cover, please seek assistance at a local automotive shop.
- Please wear proper protective equipment before you work on any vehicle.
- An assistant is recommended when removing the front bumper from your vehicle.
- Please be cautious when working with the bumper or any parts belonging to the vehicle's body to prevent scratching.
- Do not make direct contact with the halogen bulbs or the wire assembly until the unit has cooled down after use.

### TOOLS AND SUPPLIES REQUIRED

1/4" Ratchet	Plastic Pry Bar	10 mm Socket	Trim Pad Remover
			

### PRODUCT NUMBER

2LHP-F15009-SQ-RS  
2LHP-F15009G-SQ-RS  
2LHP-F15009JM-SQ-RS  
2LHP-F15009SM-SQ-RS

### LET'S START THE INSTALLATION



**STEP 1**

Remove the plastic fastener clip



**STEP 2**

Remove the three 10mm headlight mounting bolts



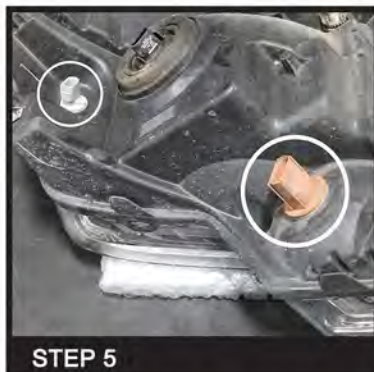
**STEP 3**

Unseat the factory headlight housing



**STEP 4**

Disconnect the headlight harness and remove the factory headlight housing



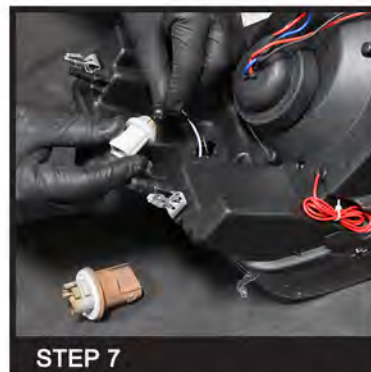
**STEP 5**

Remove the parking light socket and the turn signal socket from the factory headlight housing



**STEP 6**

Remove the parking light and turn signal light bulbs from the socket



**STEP 7**

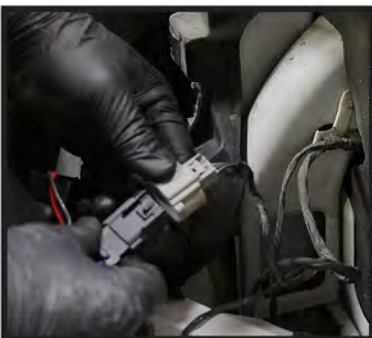
Insert the parking light plug to the light socket, (+) to (+) and (-) to (-), and then install the light socket



**STEP 8**

Insert the signal light plug to the light socket, (+) to (+) and (-) to (-), and then install the light socket





**STEP 9**

Connect the headlight harness



**STEP 10**

Seat the new headlight assembly in place



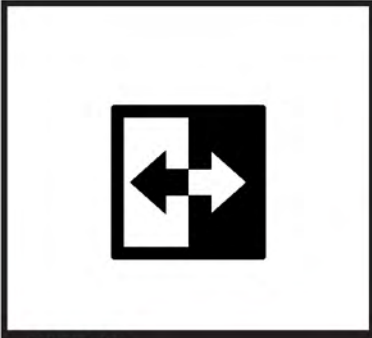
**STEP 11**

Reinstall the two 10mm headlight mounting bolts at the top



**STEP 12**

Reinstall the 10mm headlight mounting bolt at the side of the grille



**STEP 13**

Please repeat the steps from 1 to 12 for the opposite side



**STEP 14**

Connect the extension wire to the LH headlight



**STEP 15**

Also connect the extension wire to the RH headlight



**STEP 16A**

Loosen the nuts from the positive battery terminal, install the extension wire onto the positive battery terminal



**STEP 16B**

Loosen the nuts from the positive battery terminal, install the extension wire onto the positive battery terminal



**STEP 17**

Zip tie the extension wire



**STEP 18**

Reinstall the plastic fastener clip



**STEP 19**

Close the hood to complete the installation