

Installation & CARE

2015 FORD F150 PROJECTOR HEADLIGHTS INSTALLATION

BEFORE INSTALLATION

- If you experience any difficulties that the instruction did not cover, please seek assistance at local automotive shop.
- Please wear protection before you work on any vehicle.
- An assistant is useful when removing the front bumper from your vehicle.
- Please be cautious when working with the bumper or any parts belonging to the vehicles's body to prevent scratching.
- Do not make direct contact with the halogen bulbs or the wire assembly until the unit has cooled down after use.

TOOLS AND SUPPLIES REQUIRED

Ratchet	7 mm socket	10 mm socket	Flathead screwdriver
			
8 mm socket	Plastic Pry bar		
			

PRODUCT NUMBER

2LHP-F15015JM-TM
2LHP-F15015G-TM
2LHP-F15015-TM

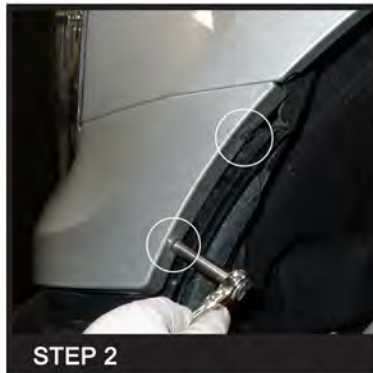


LET'S START THE INSTALLATIONS



STEP 1

Remove the headlight trim fastener



STEP 2

Remove (2) 7mm headlight trim bolts



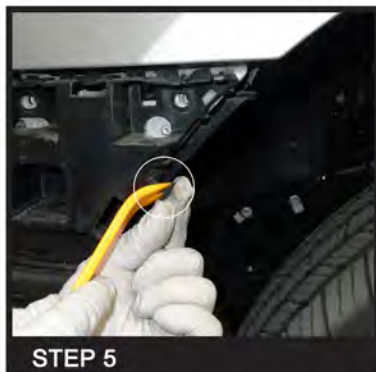
STEP 3

Remove the headlight trim



STEP 4

Remove (1) 8mm bolt and (5) 10mm headlight bracket bolts



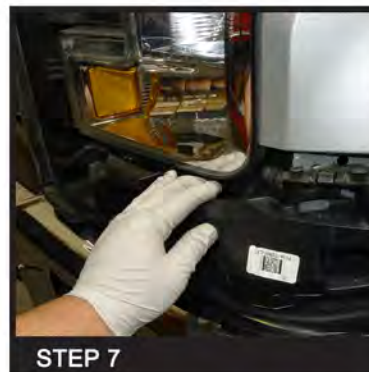
STEP 5

Remove the headlight bracket fastener in the wheel well



STEP 6

Press down retaining clip with flathead screwdriver to loosen bracket



STEP 7

Gently pry and loosen headlight bracket



STEP 8

Remove (1) 10mm front headlight bolt deep behind grille



STEP 9

Remove (2) 10mm upper headlight bolts



STEP 10

Remove the headlight housing and disconnect the sockets and connectors



STEP 11

Remove the parking light socket



STEP 12

Remove the parking light bulb



STEP 13

Attach the LED connector to the parking light socket



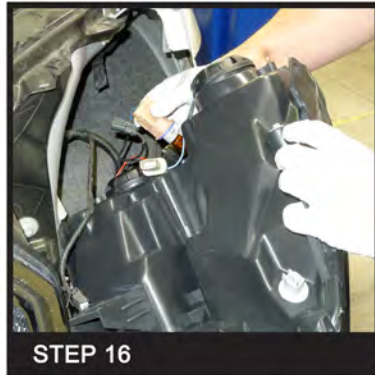
STEP 14

Secure the parking light socket onto LED headlights



STEP 15

Connect the main light connector to the projector headlight housing



STEP 16

Secure all the connectors and sockets to the LED headlight housing



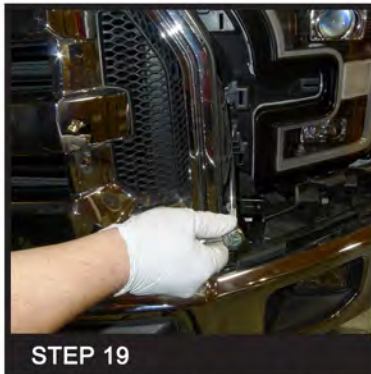
STEP 17

Secure the headlight housing



STEP 18

Reinstall (2) 10mm upper headlight bolts



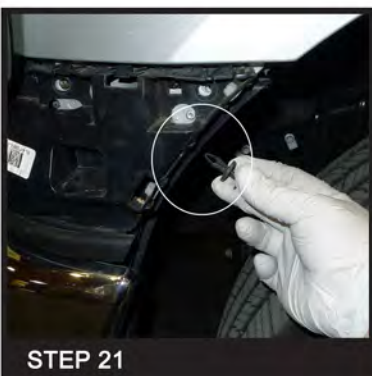
STEP 19

Reinstall (1) 10mm front headlight bolt deep behind grille



STEP 20

Secure the headlight bracket back into the original position



STEP 21

Secure the headlight bracket fastener



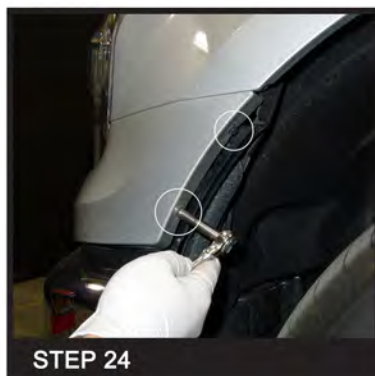
STEP 22

Reinstall (1) 8mm and (5) 10mm bracket bolts



STEP 23

Reinstall the headlight trim bolts



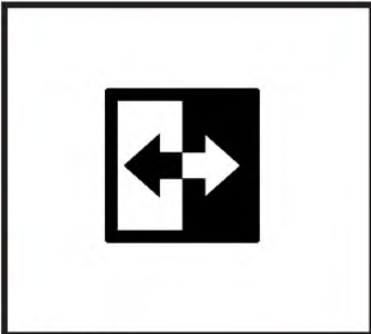
STEP 24

Reinstall (2) 7mm headlight trim bolts



STEP 25

Secure the top headlight trim fastener



STEP 26

Please repeat the steps from 1 to 25 for the opposite side



The installation is now complete