

# Installation & CARE

## 2006-2011 MERCEDES BENZ M-CLASS W164 LED TAIL LIGHTS INSTALLATION INSTRUCTIONS

### BEFORE INSTALLATION:

- If you experience any difficulties that the instructions did not cover, please seek assistance at a local automotive shop.
- Please wear protection before you work on any vehicle.
- An assistant is useful when removing the front bumper from your vehicle.
- Please be cautious when working with the bumper or any parts belonging to the vehicles's body to prevent scratching.
- Do not make direct contact with the halogen bulbs or the wire assembly until the unit has cooled down after use.

### TOOLS AND SUPPLIES REQUIRED

¼" Ratchet	8 mm socket		
			

### PRODUCT NUMBER

LT-BW16406BKLED-TM    LT-BW16406RGLED-TM  
 LT-BW16406RLED-TM    LT-BW16406JMLED-TM  
 LT-BW16406GLED-TM

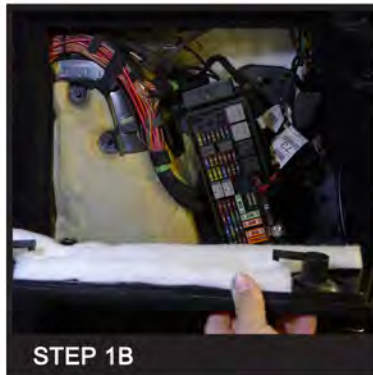


### LET'S START THE INSTALLATION



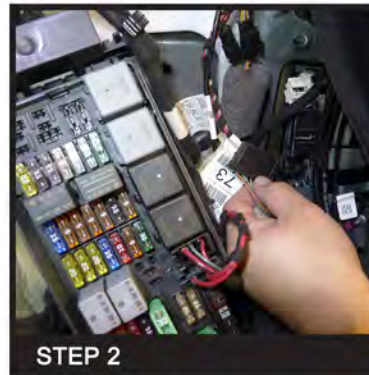
**STEP 1A**

Remove the tail light cover inside the trunk



**STEP 1B**

Remove the tail light cover inside the trunk



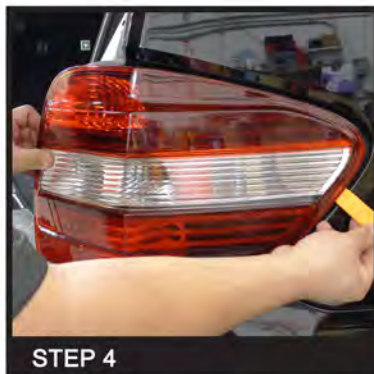
**STEP 2**

Disconnect the tail light harness



**STEP 3**

Remove the four 8mm mounting nuts



**STEP 4**

Remove the factory tail light housing



**STEP 5**

Install the new tail light housing



**STEP 6**

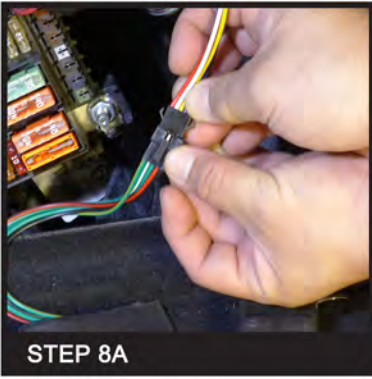
Fasten the four 8mm mounting nuts



**STEP 7**

Connect the tail light harness





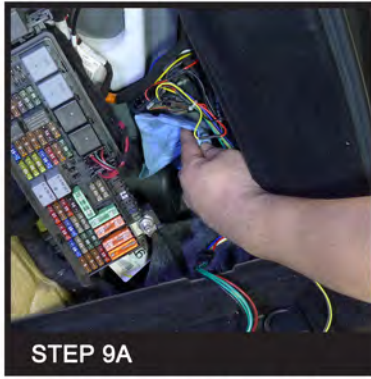
**STEP 8A**

Connect the resistor



**STEP 8B**

Connect the resistor



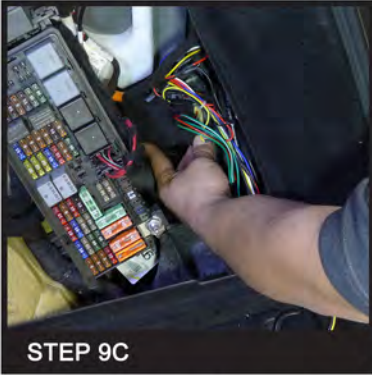
**STEP 9A**

Set the resistors on the metal area



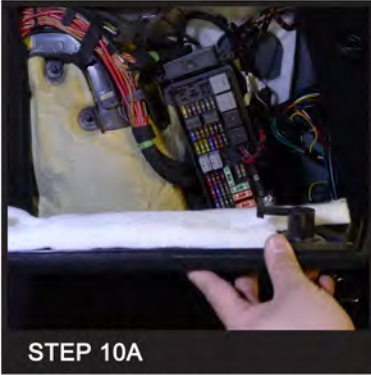
**STEP 9B**

Set the resistors on the metal area



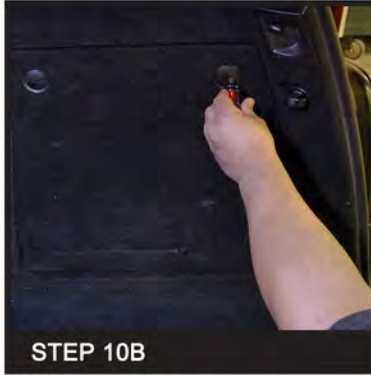
**STEP 9C**

Set the resistors on the metal area



**STEP 10A**

Reinstall the tail light cover



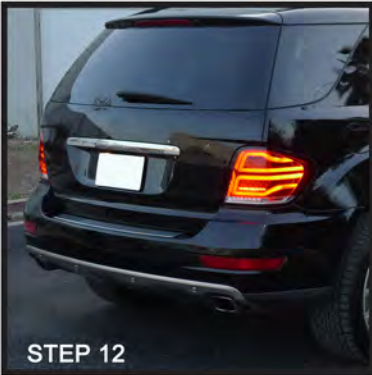
**STEP 10B**

Reinstall the tail light cover



**STEP 11**

Please repeat the steps from 1A to 10B for the opposite side



**STEP 12**

Complete

# Installation & CARE

## 2006-2011 MERCEDES BENZ M-CLASS W164 LED TAIL LIGHTS INSTALLATION INSTRUCTIONS

### BEFORE INSTALLATION

- If you experience any difficulties that the instruction did not cover, please seek assistance at local automotive shop.
- Please wear protection before you work on any vehicle.
- An assistant is useful when removing the front bumper from your vehicle.
- Please be cautious when working with the bumper or any parts belonging to the vehicles's body to prevent scratching.
- Do not make direct contact with the halogen bulbs or the wire assembly until the unit has cooled down after use.

## 2006-2011 MERCEDES BENZ M-CLASS W164 LED TAIL LIGHTS INSTALLATION INSTRUCTIONS

