

Installation & CARE

2008-2011 MERCEDES BENZ C-CLASS (W204) PROJECTOR HEADLIGHTS INSTALLATION

BEFORE INSTALLATION

- If you experience any difficulties that the instruction did not cover, please seek assistance at local automotive shop.
- Please wear protection before you work on any vehicle.
- An assistant is useful when removing the front bumper from your vehicle.
- Please be cautious when working with the bumper or any parts belonging to the vehicles's body to prevent scratching.
- Do not make direct contact with the halogen bulbs or the wire assembly until the unit has cooled down after use.

TOOLS AND SUPPLIES REQUIRED

1/4" Ratchet	8 mm socket	10 mm socket	Plastic Pry bar
			

PRODUCT NUMBER

LHP-BW20408-TM
LHP-BW20408JM-TM
LHP-BW20408G-TM



LET'S START THE INSTALLATIONS



STEP 1

Raise the hood



STEP 2

Remove the intake tubes



STEP 3

Remove the front air dam



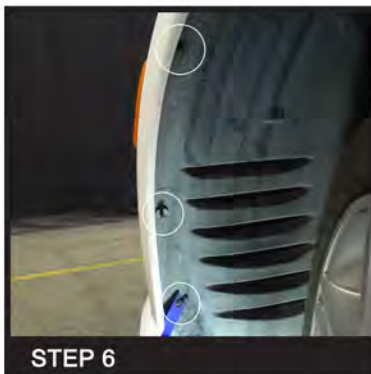
STEP 4

Remove the four headlight cover clips



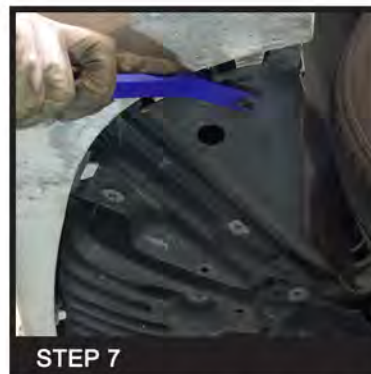
STEP 5

Remove both headlight covers



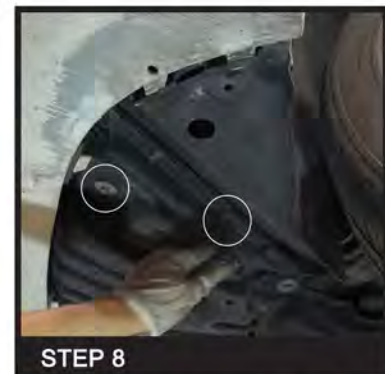
STEP 6

Remove three wheel well fasteners per side



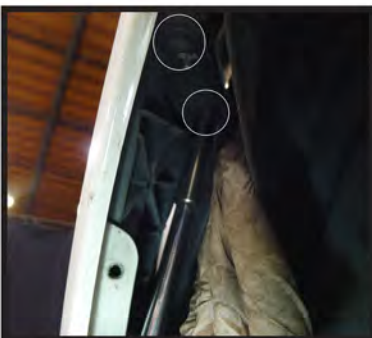
STEP 7

Remove one lower wheel well fastener



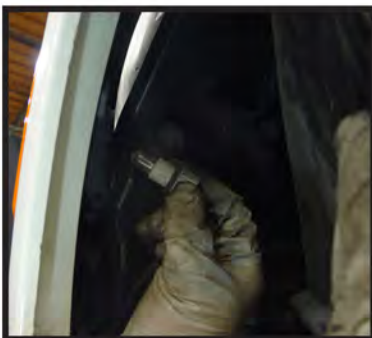
STEP 8

Remove two 8mm lower wheel well bolts



STEP 9

Pull the wheel well liner aside and remove two 10mm bumper bolts



STEP 10

Disconnect the side marker socket



STEP 11

Remove two 10mm bolts behind bumper



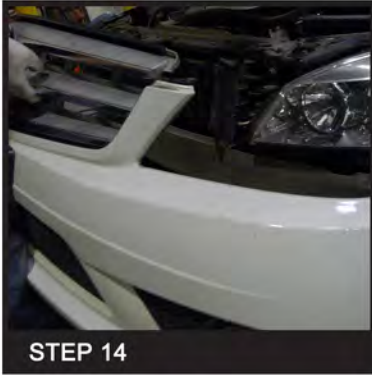
STEP 12

Disconnect the fog light connectors if equipped



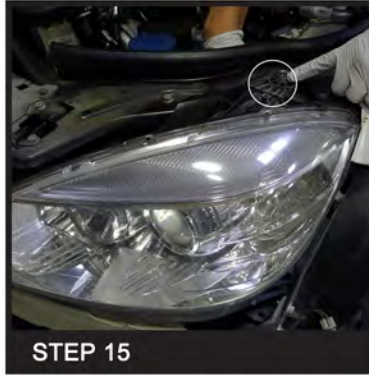
STEP 13

Remove one 10mm bumper bolt per side (near fog light)



STEP 14

Remove the bumper



STEP 15

Remove one 8mm bolt under top headlight mounting tab



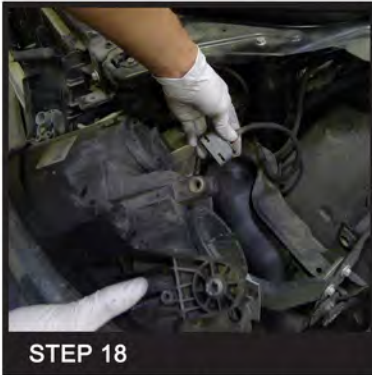
STEP 16

Remove one 8mm front headlight bolt



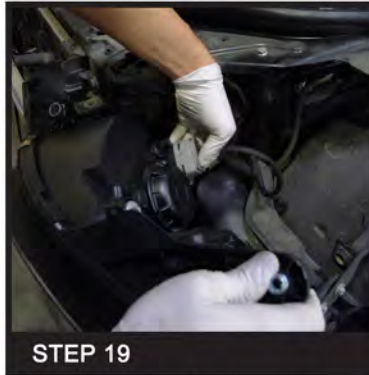
STEP 17

Remove one 8mm headlight rear side bolt



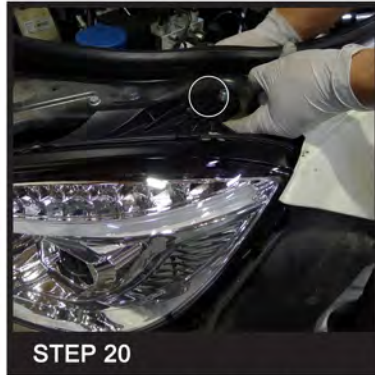
STEP 18

Remove the headlight and undo harness connector



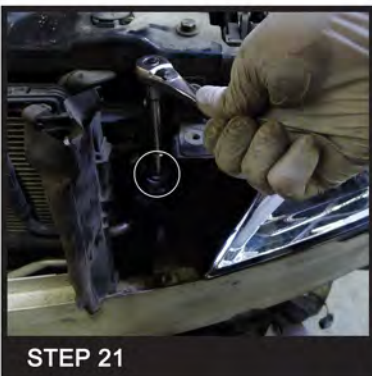
STEP 19

Install new headlight and connect harness connector



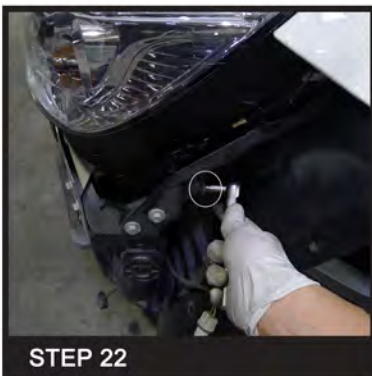
STEP 20

Reinstall one 8mm bolt under top headlight mounting tab



STEP 21

Reinstall one 8mm front headlight bolt



STEP 22

Reinstall one 8mm headlight rear side bolt



STEP 23

Repeat the step from 15-22 for opposite side



STEP 24

Reinstall the front bumper



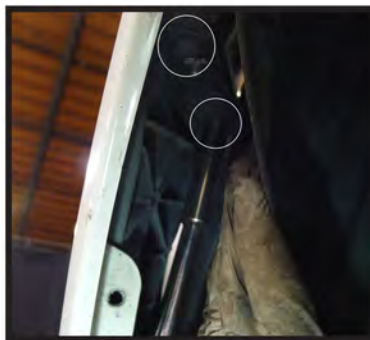
STEP 25

Reconnect the fog light harness



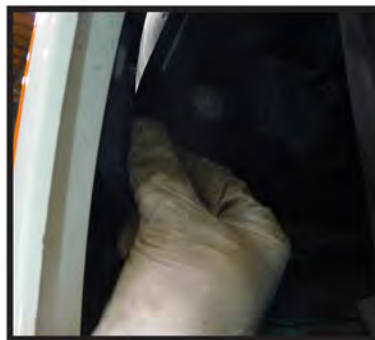
STEP 26

Reinstall two front bumper upper bolts



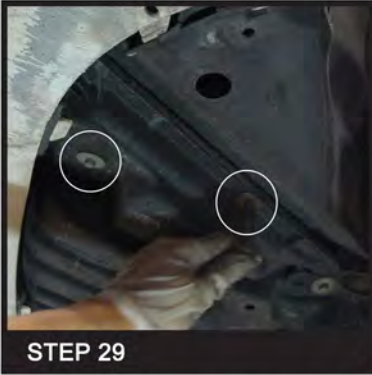
STEP 27

Pull wheel well liner aside and reinstall two 10mm bumper bolts



STEP 28

Reconnect the side marker socket



STEP 29

Reinstall two 8mm lower wheel well bolts and reinstall fastener



STEP 30

Reinstall the front air dam



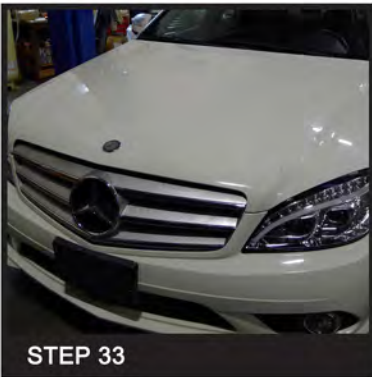
STEP 31

Reinstall two intake tubes



STEP 32

Reinstall the headlight cover and two fasteners per side



STEP 33

Close the hood

2008-2011 MERCEDES BENZ C-CLASS (W204) PROJECTOR HEADLIGHTS INSTALLATION

BEFORE INSTALLATION

- If you experience any difficulties that the instruction did not cover, please seek assistance at local automotive shop.
- Please wear protection before you work on any vehicle.
- An assistant is useful when removing the front bumper from your vehicle.
- Please be cautious when working with the bumper or any parts belonging to the vehicles's body to prevent scratching.
- Do not make direct contact with the halogen bulbs or the wire assembly until the unit has cooled down after use.

2008-2011 MERCEDES BENZ C-CLASS (W204) PROJECTOR HEADLIGHTS BACK VIEW

High/Low Beam Adjustment Screws

