

# Installation & CARE

## 2015-2017 VW GOLF 7 LED TAIL LIGHTS INSTALLATION INSTRUCTIONS

### BEFORE INSTALLATION:

- If you experience any difficulties that the instructions did not cover, please seek assistance at a local automotive shop.
- Please wear proper protective equipment before you work on any vehicle.
- An assistant is recommended when removing the front bumper from your vehicle.
- Please be cautious when working with the bumper or any parts belonging to the vehicle's body to prevent scratching.
- Do not make direct contact with the halogen bulbs or the wire assembly until the unit has cooled down after use.

### TOOLS AND SUPPLIES REQUIRED

1/4" Ratchet	Plastic Pry bar	8 mm socket	
			

### PRODUCT NUMBER

LT-GLF15BKLED-TM    LT-GLF15GLED-TM  
 LT-GLF15RGLED-TM    LT-GLF15JMLED-TM  
 LT-GLF15RLED-TM    LT-GLF15BBLED-TM

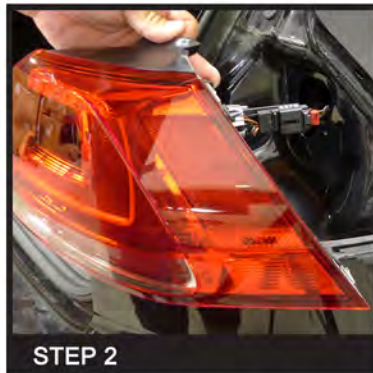


### LET'S START THE INSTALLATION



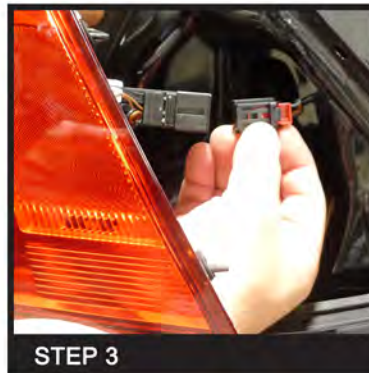
**STEP 1**

Unscrew the outer tail light mounting bolt



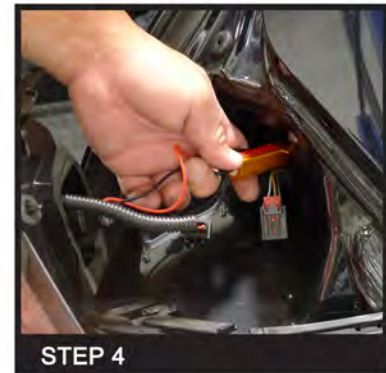
**STEP 2**

Remove the factory outer tail light housing



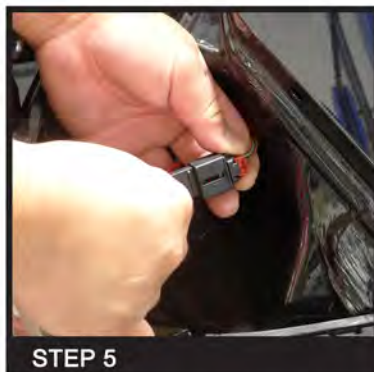
**STEP 3**

Disconnect the tail light harness



**STEP 4**

Connect the tail light resistor



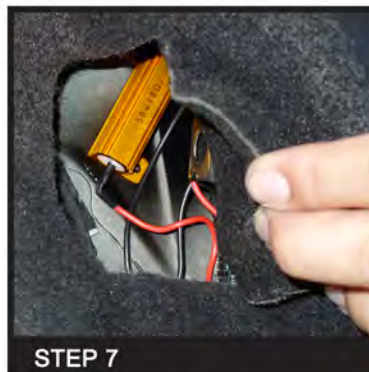
**STEP 5**

Connect the outer tail light harness



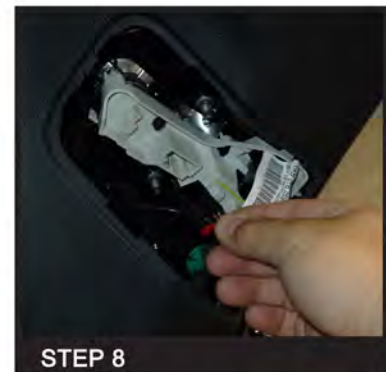
**STEP 6**

Install the new tail light housing



**STEP 7**

Set the resistor on the metal area



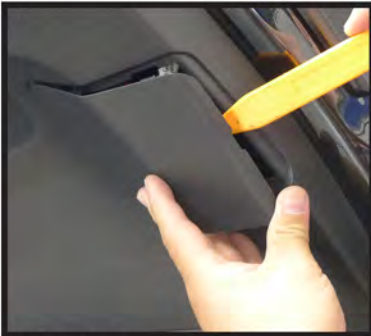
**STEP 8**

Disconnect the inner tail light harness



**STEP 9**

Fasten the outer tail light mounting bolt



**STEP 10**

Remove the inner tail light cover



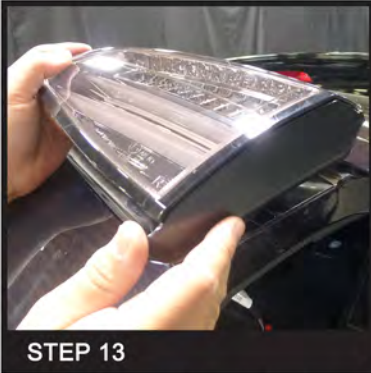
**STEP 11**

Remove the two 8mm mounting nuts



**STEP 12**

Remove the factory inner tail light housing



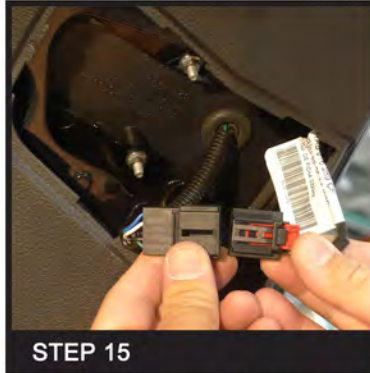
**STEP 13**

Install the new inner tail light housing



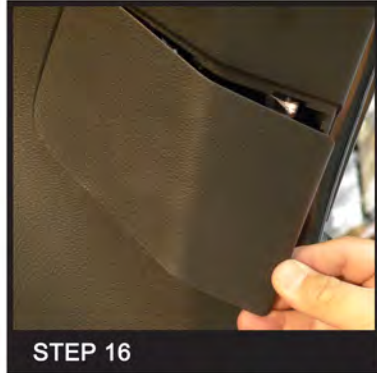
**STEP 14**

Fasten the two 8mm mounting nuts



**STEP 15**

Connect the inner tail light harness



**STEP 16**

Reinstall the inner tail light cover



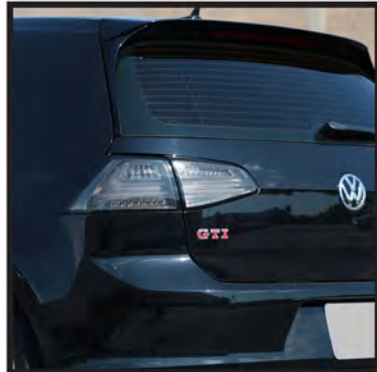
**STEP 17**

Please repeat the steps from 1 to 16 for the opposite side



**STEP 18**

Close the trunk and complete installation



## 2015-2017 VW GOLF 7 LED TAIL LIGHTS INSTALLATION INSTRUCTIONS

### BEFORE INSTALLATION:

- If you experience any difficulties that the instructions did not cover, please seek assistance at a local automotive shop.
- Please wear proper protective equipment before you work on any vehicle.
- An assistant is recommended when removing the front bumper from your vehicle.
- Please be cautious when working with the bumper or any parts belonging to the vehicle's body to prevent scratching.
- Do not make direct contact with the halogen bulbs or the wire assembly until the unit has cooled down after use.

## 2015-2017 VW GOLF 7 LED TAIL LIGHTS INSTALLATION INSTRUCTIONS

